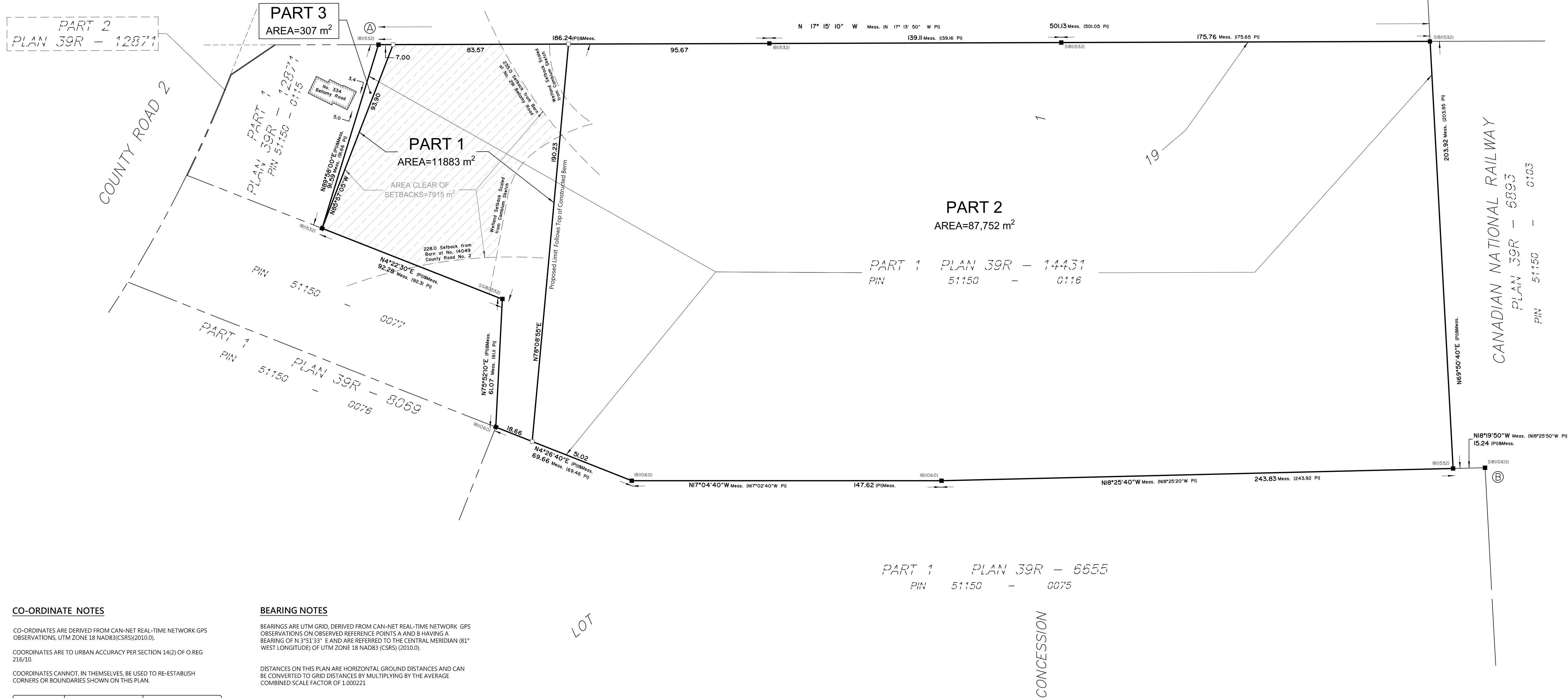
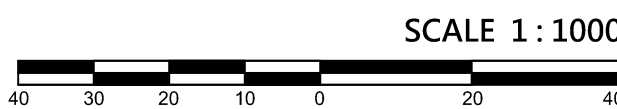


ROAD ALLOWANCE BETWEEN LOTS 18 & 19
PIN 51150 - 0094



SCHEDULE			
PART	LOT	CONCESSION	PIN
1	PART OF 19	1	ALL OF 51150 - 0116
2			
3			

PLAN OF SURVEY OF
PART OF LOT 19
CONCESSION 1
TOWNSHIP OF CRAMAHE
COUNTY OF NORTHUMBERLAND
MONUMENT-URSO SURVEYING LTD.



The intended plot size of the plan is 914 mm in width by 457 mm in height when plotted at a scale of 1:1000.

METRIC
DISTANCES AND COORDINATES SHOWN ON THIS PLAN ARE IN METRES AND CAN BE CONVERTED TO FEET BY DIVIDING BY 0.3048.


SURVEYOR'S CERTIFICATE
I CERTIFY THAT:
1. THIS SURVEY AND PLAN ARE CORRECT AND IN ACCORDANCE WITH THE SURVEYS ACT, THE SURVEYORS ACT, AND THE REGULATIONS MADE UNDER THEM.
2. THE SURVEY WAS COMPLETED ON XXXXX XX, 2024.

DATE _____ JAKE ANDERSON
ONTARIO LAND SURVEYOR

This plan of survey relates to AOLS Plan Submission Form Number V-88885

LEGEND	
■	DENOTES FOUND SURVEY MONUMENT
□	PLANTED SURVEY MONUMENT
IB	IRON BAR
SIB	STANDARD IRON BAR
SSIB	SHORT STANDARD IRON BAR
(WIT)	WITNESS
ACC.	ACCEPTED
MEAS.	MEASURED
(1476)	MONUMENT-URSO SURVEYING LTD.
(P1)	PLAN 39R-14431
///	AREA CLEAR OF SETBACKS

NOTE THAT THE CAMBIUM SKETCH REFERRED TO IS FROM THE ENVIRONMENTAL IMPACT STUDY - 280 BELLAMY ROAD, TOWNSHIP OF CRAMAHE, COUNTY OF NORTHUMBERLAND, ONTARIO PREPARED BY CAMBIUM DATED NOVEMBER 11, 2024, PAGE 52.



Monument-Urso Surveying Ltd.
Ontario Land Surveyors | Canada Land Surveyors
1755 WOODWARD DRIVE
OTTAWA, ON K2C 0P9
536 C FOURTH LINE EAST
SAULT STE MARIE ON, P6A 6J8
TEL: (613) 800-1583
TEL: (705) 254-7851
FAX: (705) 254-5571

DRAWN: ED	FIELD: MW	FILE NO:
PROCESSED: JA	CHECKED: JA	24-0143_P1119_R_D4

CO-ORDINATE NOTES
CO-ORDINATES ARE DERIVED FROM CAN-NET REAL-TIME NETWORK GPS OBSERVATIONS, UTM ZONE 18 NAD83(CSRS)(2010.0).
COORDINATES ARE TO URBAN ACCURACY PER SECTION 14(2) OF O.REG 216/10.
COORDINATES CANNOT, IN THEMSELVES, BE USED TO RE-ESTABLISH CORNERS OR BOUNDARIES SHOWN ON THIS PLAN.

POINT ID	NORTHING	EASTING
A	4877703.94	273667.10
B	4877140.54	273629.09

BEARING NOTES
BEARINGS ARE UTM GRID, DERIVED FROM CAN-NET REAL-TIME NETWORK GPS OBSERVATIONS ON OBSERVED REFERENCE POINTS A AND B HAVING A BEARING OF N 3°51'33" E AND ARE REFERRED TO THE CENTRAL MERIDIAN (81° WEST LONGITUDE) OF UTM ZONE 18 NAD83 (CSRS) (2010.0).
DISTANCES ON THIS PLAN ARE HORIZONTAL GROUND DISTANCES AND CAN BE CONVERTED TO GRID DISTANCES BY MULTIPLYING BY THE AVERAGE COMBINED SCALE FACTOR OF 1.000221